

**ARCHITECTURAL
BRASS**
A DIVISION OF LEVENTIC



PLANTERS

BE THE
ZEKI

**ARCHITECTURAL
BRASS**

A DIVISION OF LEVENT INDUSTRIES, INC.



ZK-001



ZK-002



ZK-003



ZK-004



ZK-005



ZK-009



ZK-008



ZK-007



ZK-006

ELEGANT PLANTERS
in **WOOD**

**ARCHITECTURAL
BRASS**

A DIVISION OF LEVENT INDUSTRIES, INC.

WD-001



WD-002



WD-003



WD-006



WD-007



WD-004



WD-005

THE
ETRUSCAN
SERIES

**ARCHITECTURAL
BRASS**

A DIVISION OF LEVENT INDUSTRIES, INC.



ETR-001



ETR-002



ARCHITECTURAL BRASS

A DIVISION OF I EVENT INDUSTRIES, INC.

OUR NEW SHAPES OF ELEGANT PLANTERS

VANCOUVER™
SHOWN WITH OPTIONAL
SEE-THROUGH CIRCLE

THE SHIFT™
AVAILABLE IN SQUARE
OR ROUND

STUDIO™
IN WOVEN WYNIL

TAPERED TWIST™
SHOWN IN STAINLESS STEEL

THE SPIN™
IN BLACK POWDER COAT

GO **STRAIGHT
ON**

**ARCHITECTURAL
BRASS**

A DIVISION OF LEVENT INDUSTRIES, INC.



SO-001



SO-002



SO-003



SO-007



SO-004



SO-006



SO-005

OUR GREAT
WALLS OF BEAUTY

**ARCHITECTURAL
BRASS**

A DIVISION OF LEVENT INDUSTRIES, INC.



WLL-001



WLL-002



WLL-005



WLL-003



WLL-004



WLL-004



THE **LONGEST**
OF ELEGANT PLANTERS

**ARCHITECTURAL
BRASS**

A DIVISION OF LEVENT INDUSTRIES, INC.

LP-001



LP-002



LP-003



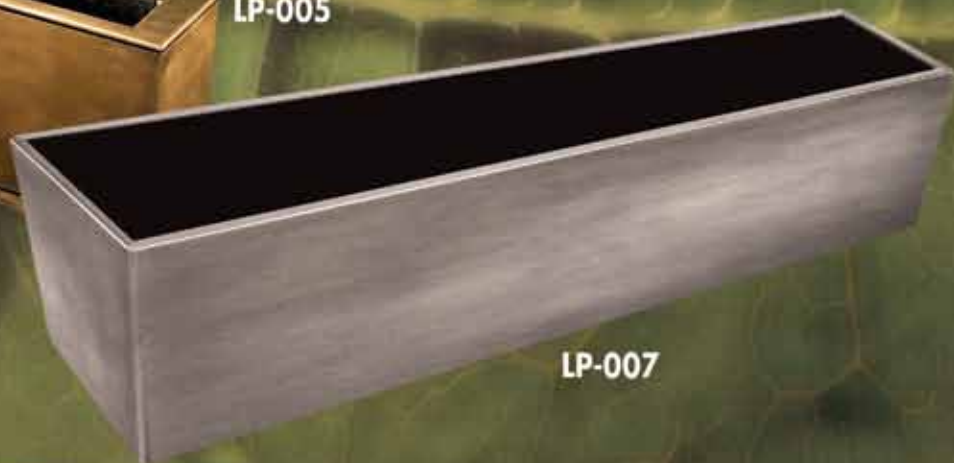
LP-006



LP-004



LP-005



LP-007

LP-008



WOK-001

**ARCHITECTURAL
BRASS**

A DIVISION OF LEVENT INDUSTRIES, INC.



OUR
WOKS NEW
LINE

WOK 2-001



ARCHITECTURAL BRASS

A DIVISION OF LEVENT INDUSTRIES, INC.



THE WEDGE™



**ARCHITECTURAL
BRASS**

A DIVISION OF LEVENT INDUSTRIES, INC.

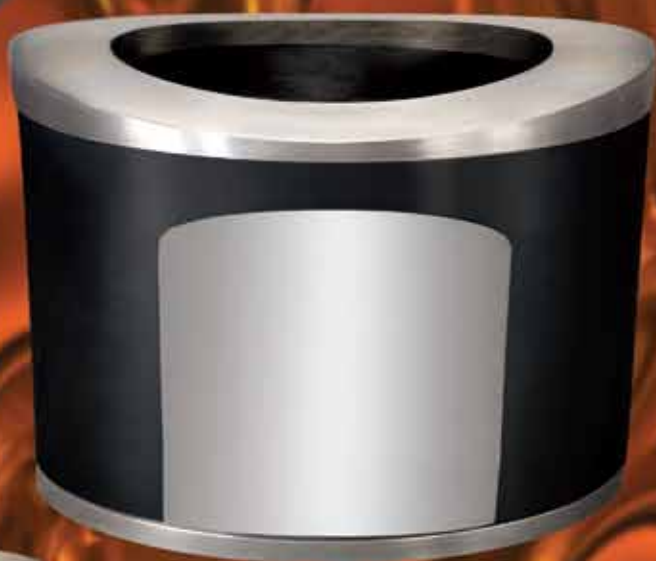
**SHIFT ROUND™
SERIES**

patent pending

**ARCHITECTURAL
BRASS**

A DIVISION OF LEVENT INDUSTRIES, INC.

**PLASMA™
PLANTERS**



404.351.0594 • Fax: 404.351.5721 • www.architecturalbrass.com • 1130 DL Hollowell Pkwy, Atlanta, GA 30318

All Architectural Brass products shown are U.S. patent pending

**ARCHITECTURAL
BRASS**
A DIVISION OF LEVENT INDUSTRIES, INC.

THE **CYLINDERS**



CYL-001



CYL-002



CYL-003



CYL-004



CYL-005



CYL-008



CYL-007



CYL-006



ARCHITECTURAL BRASS

A DIVISION OF LEVENT INDUSTRIES, INC.



MR-002



MR-003



MR-003

MR-010



MR-009



MR-008



MR-006



MR-007



BE SQUARE

ARCHITECTURAL BRASS

A DIVISION OF LEVITT INDUSTRIES, INC.



SQ-001



SQ-001A



SQ-001B



SQ-002



SQ-003



SQ-004



SQ-010



SQ-005



SQ-009



SQ-008



SQ-006



SQ-007

SHAPES

ARCHITECTURAL BRASS

A DIVISION OF LEVENT INDUSTRIES, INC.



SP-001



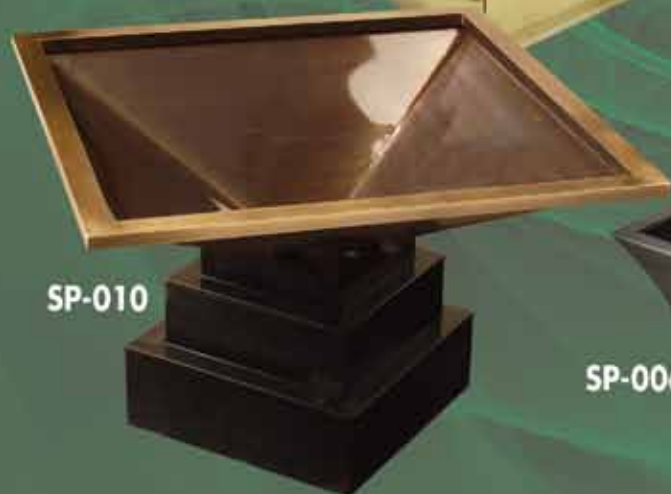
SP-003



SP-002



SP-004



SP-010



SP-005



SP-006



SP-007



SP-009



SP-008

ARCHITECTURAL BRASS

A DIVISION OF LEVENT INDUSTRIES, INC.

THE CLASSIC COLUMNS SERIES™



PUBLIC AREA SPECIALIST



**ARCHITECTURAL
BRASS**
A DIVISION OF LEVITT, INC.



**CARRIZO
COLLECTION™**

LARGE TREE PLANTERS ~ ASH TRASH CONTAINERS
FIBERGLASS & SOLID TORCHED BRONZE



AVAILABLE IN ANY PANTONE COLOR



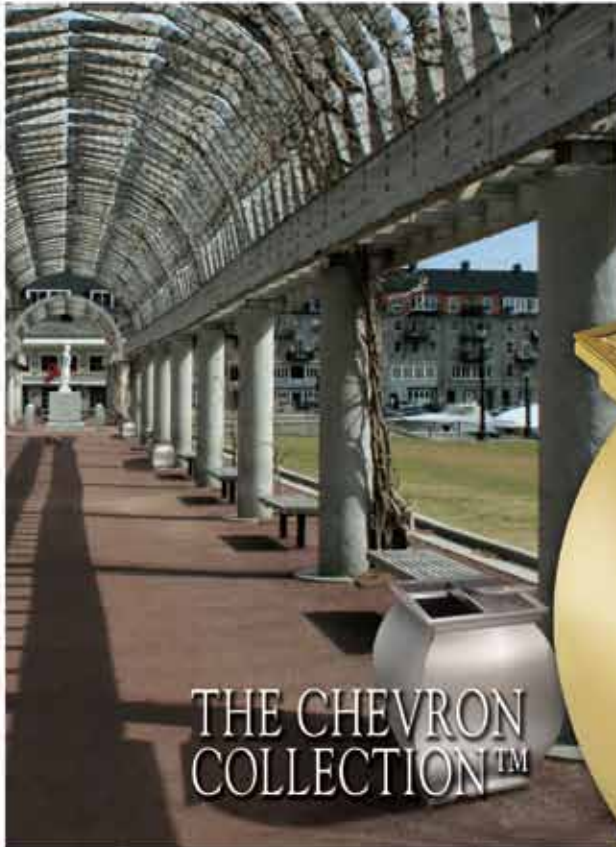
1130 D.L. HOLLOWELL PKWY. • ATLANTA, GA. 30318 • 404.351.0594 / FAX: 404.875.3414 • 1.800.PLANTER (752.6837)

WEB: ARCHITECTURALBRASS.COM ~ E.MAIL: INFO@ARCHITECTURALBRASS.COM

ASH/TRASH-PLANTERS-BELLCARTS-HOUSE KEEPING & MAID CARTS-CROWD CONTROL PRODUCTS
MENU SIGNS-TABLES, BENCHES AND FOOD COURT COUNTERS-RECYCLE RECEPTACLES-ACCESSORIES

ARCHITECTURAL BRASS

A DIVISION OF LEVENT, INC.



THE CHEVRON COLLECTION™

Extremely heavy-duty, vandal proof, weather proof and are excellent for Malls, Airports, Casino, Parks, etc..



Exterior 55 gallon receptacles.

Beautiful planters in all sizes.

AVAILABLE IN A MULTITUDE OF FINISHES, METALS AND TOP STYLES



1130 D.L. HOLLOWELL PKWY. • ATLANTA, GA. 30318 • 404.351.0594 / FAX: 404.875.3414 • 1.800.PLANTER (752.6837)

WEB: ARCHITECTURALBRASS.COM ~ E.MAIL: INFO@ARCHITECTURALBRASS.COM

ASH/TRASH-PLANTERS-BELLCARTS-HOUSE KEEPING & MAID CARTS-CROWD CONTROL PRODUCTS
MENU SIGNS-TABLES, BENCHES AND FOOD COURT COUNTERS-RECYCLE RECEPTACLES-ACCESSORIES