



ARCHITECTURAL BRASS

Div. of Levent Industries Inc.

# AVIATION CATALOG 2021



ARCHITECTURAL BRASS CO

1130 D. L. Hollowell Pkwy.

Atlanta, GA 30318

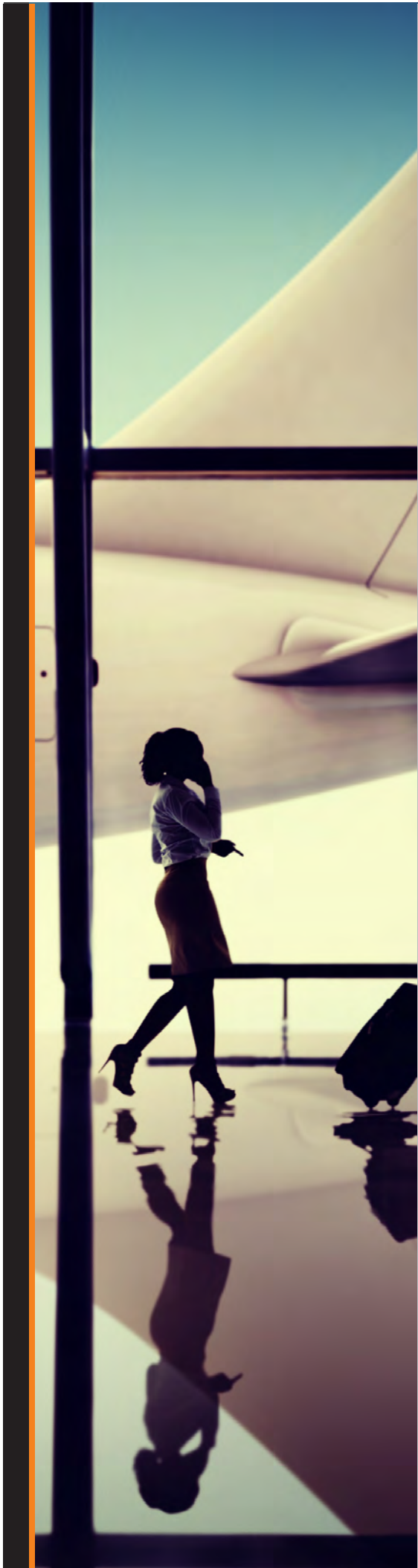
p 404.351.0594

f 404.351.5721

1.800.PLANTER(752.6837)

info@architecturalbrass.com

www.architecturalbrass.com





CHECK PODIUM **TSA ID**  
36"L x 28"W x 48"H

**CHECKPOINT STATION**  
26"Dia x 38"H Overall

Tank Dimension:  
24"Dia x 26"H  
Approximately  
40 Gallon Capacity



**WATER COLLECTION STATION**  
26"Sq x 62.5"H

**CHECKPOINT STATION**  
26"Sq x 62.5"H





CARBON FIBER **TESLA™**  
12"D x 5'H

**TESLA™** CARBON FIBER  
12"D x 5'H

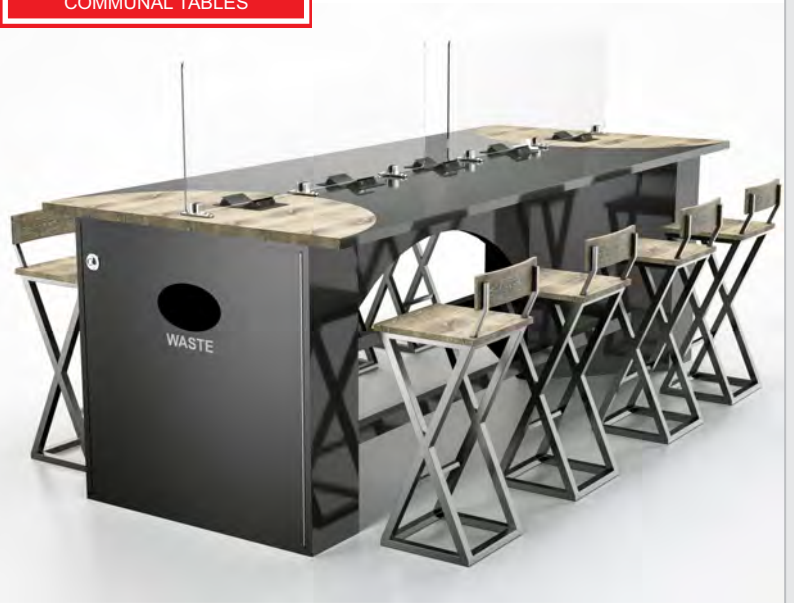


CARBON FIBER **CROWD CONTROL™**  
12"D x 5'H

**TESLA™** CARBON FIBER  
12"D x 5'H



**COVID 19**  
SAFETY GLASS PARTITIONS  
ARE AVAILABLE FOR ALL  
ARCHITECTURAL BRASS  
COMMUNAL TABLES



**CONDESCENDING TABLE™**

124"L x 42"W x 42"H

**CONDESCENDING TABLE™**

124"L x 42"W x 42"H



**CONDESCENDING TABLE™**

124"L x 42"W x 42"H

**CONDESCENDING TABLE™**

124"L x 42"W x 42"H





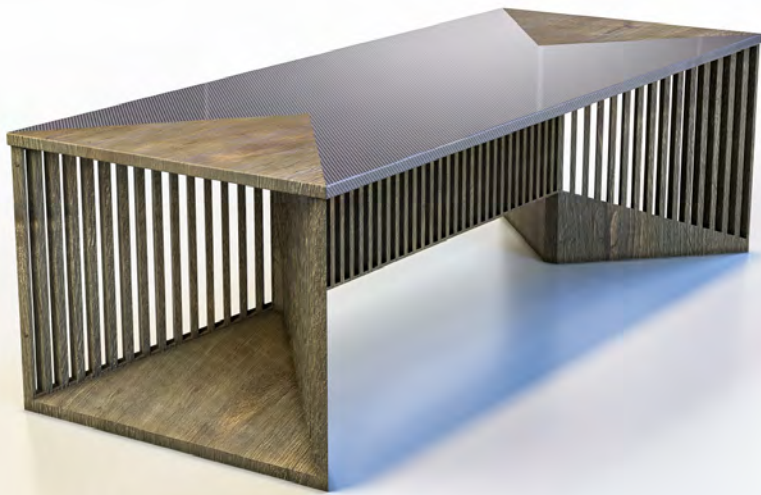
**CONDESCENDING TABLE™**

124"L x 42"W x 42"H

**CONDESCENDING TABLE™**

124"L x 42"W x 42"H

**COVID 19**  
 SAFETY GLASS PARTITIONS  
 ARE AVAILABLE FOR ALL  
 ARCHITECTURAL BRASS  
 COMMUNAL TABLES



**SILHOUETTE™**

84"L x 42"W x 30"H

**X MOTION™**

42"L x 42"W x 42"H





**HIGH LOW TECH TABLE**

192"L x 34"W x 46"H



**TERMINAL TABLE**

120"L x 36"W x 38"H



**CHARGING STATION**

108"L x 25"W x 42"H x 51"H Overall



**TERMINAL 5 COMMUNAL TABLE**

124"L x 36"W x 42"H

**COVID 19**  
 SAFETY GLASS PARTITIONS  
 ARE AVAILABLE FOR ALL  
 ARCHITECTURAL BRASS  
 COMMUNAL TABLES



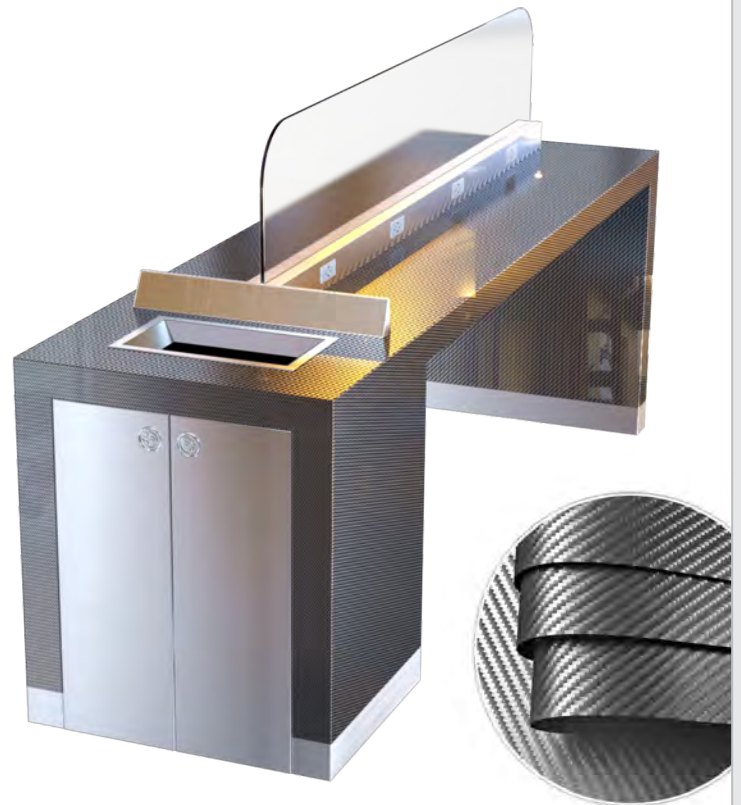


**COVID 19**  
 SAFETY GLASS PARTITIONS  
 ARE AVAILABLE FOR ALL  
 ARCHITECTURAL BRASS  
 COMMUNAL TABLES



COMMUNAL TABLE **TERMINAL 5™**  
 124"L x 42"W x 42"H

**TERMINAL 5™** COMMUNAL TABLE  
 124"L x 42"W x 42"H



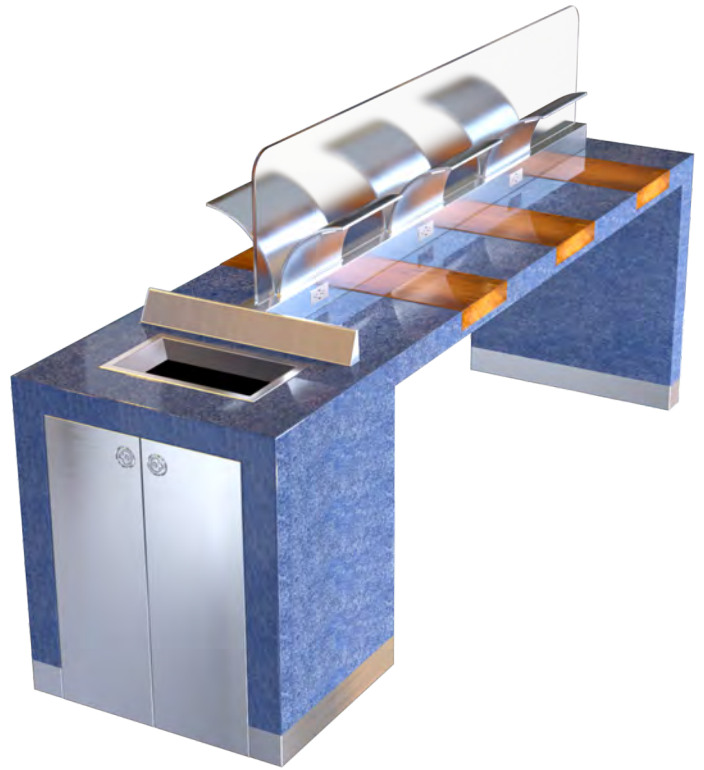
COMMUNAL TABLE **TERMINAL 5™**  
 124"L x 42"W x 42"H

**TERMINAL 5** COMMUNAL TABLE  
 124"L x 36"W x 42"H





**COVID 19**  
 SAFETY GLASS PARTITIONS  
 ARE AVAILABLE FOR ALL  
 ARCHITECTURAL BRASS  
 COMMUNAL TABLES



COMMUNAL TABLE

TERMINAL 5 COMMUNAL TABLE

120"L x 36"W x 38"H



COMMUNAL TABLE **TERMINAL 5**

**TERMINAL 5** COMMUNAL TABLE

120"W x 36"H x 38"H

120"W x 36"H x 38"H



**COVID 19**  
SAFETY GLASS PARTITIONS  
ARE AVAILABLE FOR ALL  
ARCHITECTURAL BRASS  
COMMUNAL TABLES

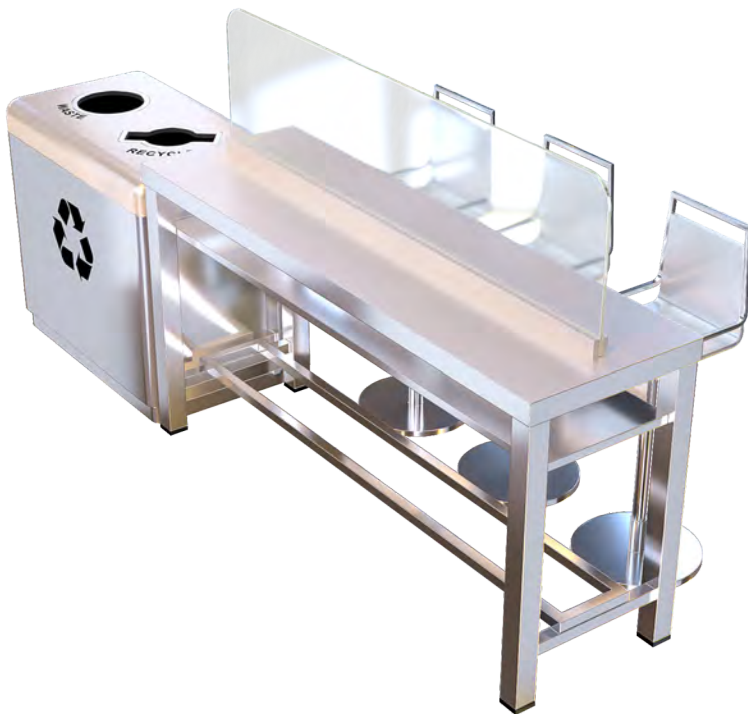


**STAND UP TABLE**

108"L x 20"W x 42"H

**STAND UP TABLE**

108"L x 20"W x 42"H



**STAND UP TABLE**

84"L x 24"W x 42"H

**STAND UP TABLE**

84"L x 24"W x 42"H





### PHX TABLE

210"L x 36"W x 38"H

### UTC HIGH STAND TABLE

203"L x 42"W x 42"H



**COVID 19**  
 SAFETY GLASS PARTITIONS  
 ARE AVAILABLE FOR ALL  
 ARCHITECTURAL BRASS  
 COMMUNAL TABLES



### HIGH STAND TABLE UTC

203"L x 42"W x 42"H





**COVID 19**  
SAFETY GLASS PARTITIONS  
ARE AVAILABLE FOR ALL  
ARCHITECTURAL BRASS  
COMMUNAL TABLES



COMMUNAL TABLE **TILT™**

96"L x 24"W x 41"H

**CUSTOM CORIAN TABLE**



**BISTRO™ TABLE**

48"L x 24"W x 30"H | 24"Sq x 30"H

**NUTRITION™ FOOD COURT TABLE**

24"Sq x 24"H | 24"Sq x 30"H | 30"Sq x 30"H | 36"Sq x 36"H



**COVID 19**  
SAFETY GLASS PARTITIONS  
ARE AVAILABLE FOR ALL  
ARCHITECTURAL BRASS  
COMMUNAL TABLES



**CONNECTED TABLE**

**TIVOLI™** TABLE WITH FUELING STATION

34"L x 24"D x 30"H



**FOOD COURT TABLE**

**FOOD COURT TABLE**





COMMUNAL TABLE

149"L x 36"W x 43"H



TRACK™ COMMUNAL TABLE

10'L x 36"W x 42"H



**COVID 19**  
 SAFETY GLASS PARTITIONS  
 ARE AVAILABLE FOR ALL  
 ARCHITECTURAL BRASS  
 COMMUNAL TABLES



CUSTOM COMMUNITY TABLE

124"L x 39"W x 48"H

CUSTOM COMMUNITY TABLE

124"L x 39"W x 48"H



**COVID 19**  
SAFETY GLASS PARTITIONS  
ARE AVAILABLE FOR ALL  
ARCHITECTURAL BRASS  
COMMUNAL TABLES



**BURLINGTON TABLE**

**AFFICHE™**

39'L x 21"W x 7'H



**YYC BENTLEY™**

**AFFICHE™**

39'L x 21"W x 7'H





CARBON FIBER **SEA TAC™**  
24"L x 18"W x 36"H x 49"H Overall

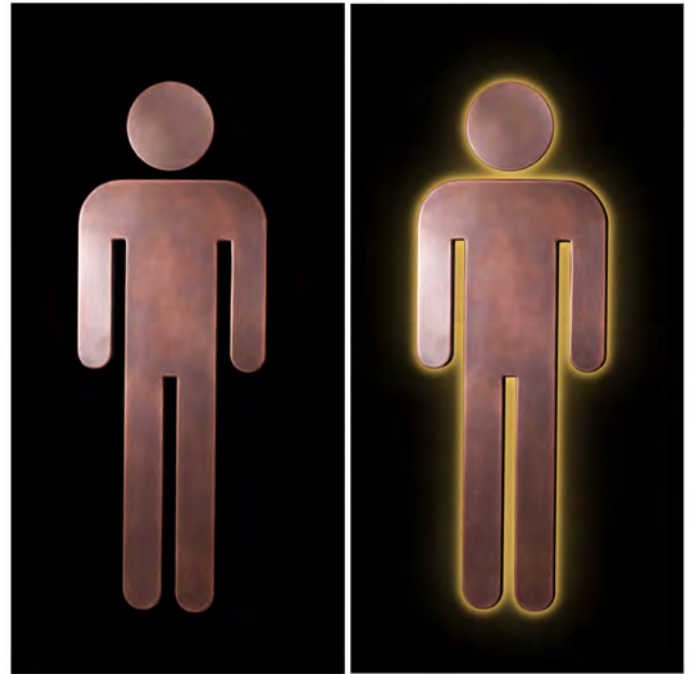
**SEA TAC™** CARBON FIBER  
24"L x 18"W x 36"H x 51"H Overall



KIOSK SYSTEM **CALGARY™ SERIES**  
43.5"L x 20"W x 35"H x 69"H Overall

**CALGARY™ SERIES** KIOSK SYSTEM  
43.5"L x 20"W x 35"H x 69"H Overall



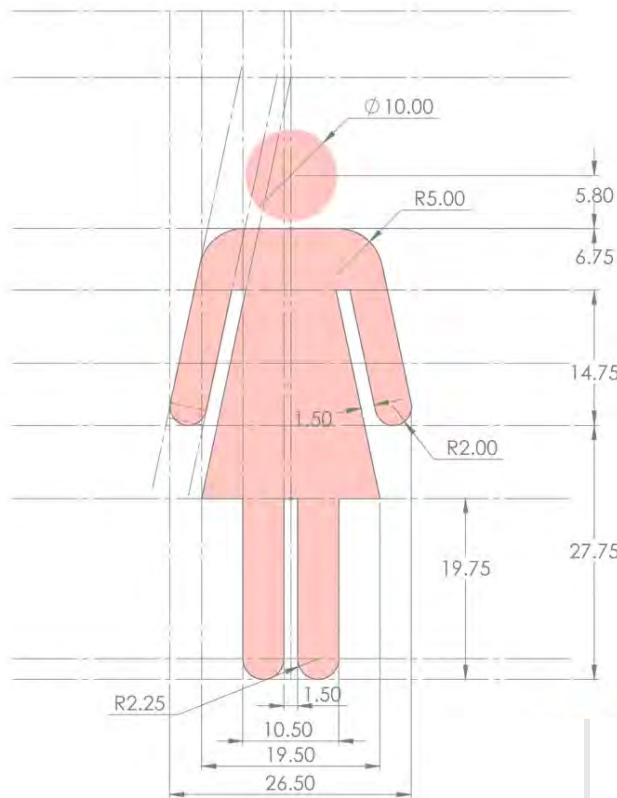


### FEMALE PICTOGRAM

26.5"W x 60"H

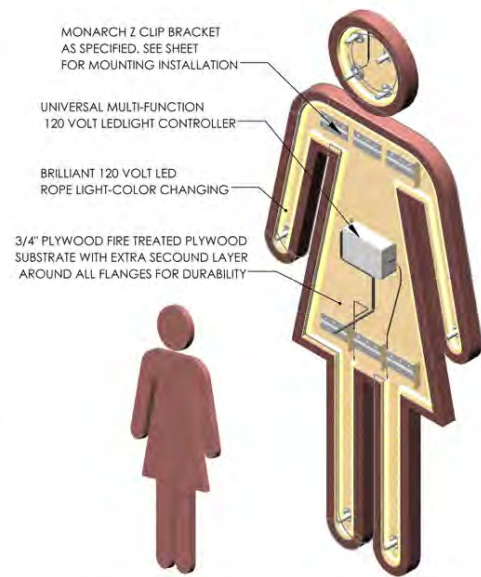
### MALE PICTOGRAM

21.5"W x 60"H



NOTES:

- 1. FEMALE RESTROOM PICTOGRAM
- 2. MATERIAL:
  - 1. SOLID .093THICK (13GA) 110 COOPER
- 3. FINISH:
  - 1. NON-DIRECTIONAL ANTIQUE COPPER
  - 2. LACQUER PROTECTIVE COATING



### FEMALE PICTOGRAM

21.5"W x 60"H





RECYCLING WASTE CONTAINER

LAS VEGAS™ SERIES

57"L x 18"W x 39"H

45"L x 25"W x 34"H



MADISON SQUARE™

JELLO™

24"Sq x 36"H

22"Sq x 30"H | 25"Sq x 35"H





### SANDS EXPO

### LAX RECYCLE UNIT

60"L x 26"W x 34"H



### ICE CUBES™

### RELAIX™

18"D Top x 20"D Base x 30"W x 34"H

60.25"L x 24.25"W x 32"H





### GUILDFORD™

### GRAND CENTRAL

TOP 54"L x 18"W BASE 47"L x 18"W x 45"H

54"L x 18"W x 34"H



### CAFFETTERIA™

### TERMINAL™ TRAY MANAGER

48"L x 24"W x 46"H





TRAY MANAGER **OVAL™**  
22"L x 8"W x 36"H

**WAVE™** TRAY MANAGER  
45"L x 24"W x 46"H



**TRAY MANAGER FOODCOURT™**

36"L x 18"W x 36"H





**GREEN STREET™**

60"L x 18"W x 45"H

**GREEN STREET™ -R**

86"L x 24"W x 47"H



**UNLV™**

36"L x 18"W x 45"H

**McCARRAN**





**YYC SINGLE UNIT**

24"L x 18"W x 32"H

**YYC BENTLEY™**

44"L x 18"W x 34"H



**YYC BENTLEY™**

**YYC BENTLEY™**

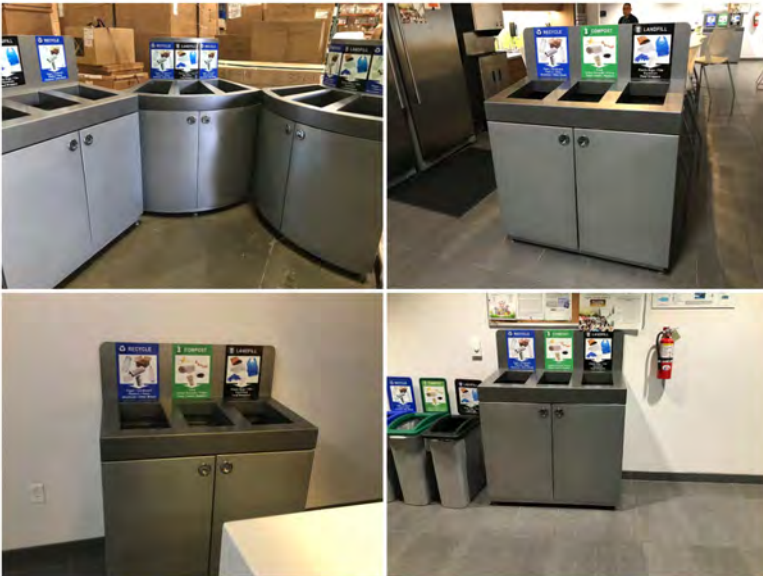




### AVIATION SERIES

### COLUMN HUGGER™

49"L/35"L(front/back) x 28"W x 35.5"H/51.5"H(front/back)



### PHOENIX SKY HARBOR

### COLUMN HUGGER™

49"L/35"L(front/back) x 28"W x 35.5"H/51.5"H(front/back)





SEA-TAC AVIATION 2™

SEA-TAC AVIATION 2™

24"L x 18"W x 36"H

24"L x 18"W x 36"H



DIGNITY HEALTH™

DIGNITY HEALTH™

40"L x 24"W x 36"H

40"L x 24"W x 36"H





**AL BALAGH HENDRIX™**

44"L x 23"W x 30"H

42"L x 24"W x 34"H



**CITIZEN-R™ EXPO-R™**

66"L x 26"W x 48"H

72"L x 24"W x 36"H





**COMPOUND™**

**GRAND CENTRAL™**

58"L x 22"W x 58"H

54"L x 36"W x 34"H



**GRAND CENTRAL™**

**BENTLEY III™**

54"L x 18"W x 34"H

22"Sq x 36"H





**BENTLEY II™**

44"L x 22"W x 36"H

**BENTLEY II™**

22" Sq x 36"H



**RECYCLING UNIT UTC**

98"L x 33.5"W x 49.25"H

**UTC RECYCLING UNIT**

47"L x 33.5"W x 49.25"H





### HALE KOA 1

26"L x 18"W x 29.5"H

### HALE KOA 2

32"L x 27"W x 29"H



### AMBIENCE™

51"L x 27"W x 38"H

### AURORA-R™





**MOD™**

**WAVE™**

22" Dia x 34"H

10"L x 12"W x 24"H | 15"L x 20"W x 34"H



**AIRPORT BIN TRIAD™**

21.5"L x 13"W x 33.5"H





TRIAD™

OVAL™

25"L x 16"W x 34"H



HAVANA™

HAVANA™

17.75"Sq x 31"H

17.75"Sq x 31"H





**HAVANA™**

34"L x 18"W x 31"H

**HAVANA™**

34"L x 18"W x 31"H



**HAVANA™**

46"L x 17.75"W x 31"H

**HAVANA™**

65.75"L x 17.75"W x 31"H





**AIRPORT™**

**TERMINAL™**

10" Sq x 24"H | 18" Sq x 36"H



**AIRPORT™**

**AIRPORT TRASH**

24" Dia x 34"H





**UNC**

**ORBIT™**

18"Dia x 34"H

22"Dia x 36"H



**AIRPORT™**

**AUSSIE™**

22"Dia x 34"H





**SCHOOL OF FISH™**

15" Dia x 32"H | 24" Dia x 36"H

**SCHOOL OF FISH™**

15" Dia x 32"H | 24" Dia x 36"H



**SCHOOL OF FISH™**

24"L x 12"D x 34"H

**CHESS™**

23" Dia x 44"H





### MERSIN STATION

44"L x 10"W x 80.5"H

### ATKINS PARK™ I

24"Dia x 38"H



### 42'nd STREET™

10"Dia x 24"H | 18"Dia x 36"H

### ATKINS PARK™ I II III

24"Dia x 38"H





**CITY CENTER™**

**RED HAWK™**

10" Dia x 24"H | 18" Dia x 36"H



**42'nd STREET™**

**LEESBURGH™**

10" Dia x 24"H | 18" Dia x 36"H

24" Sq x 32"H





**AVENUE™ TENT TOP**

**LA SPEZIA™**

20" Sq x 44"H



**RED GRASS™**

**VOILA'™**

27" Sq x 50"H

15" Dia x 36"H | 18" Dia x 36"H





**VOILA™**

15" Dia x 36"H | 18" Dia x 36"H

**VOILA™**

15" Dia x 36"H | 18" Dia x 36"H



**VOILA™**

15" Dia x 36"H | 18" Dia x 36"H

**MOD™**

15" Dia x 36"H | 18" Dia x 36"H





**CANOGA™**

24" Sq x 32"H x 42"H Overall

**RED GRASS™**

27" Sq x 50"H



**STUDIO™**

10" Dia x 24"H | 18" Dia x 36"H

**MOD™**

15" Dia x 36"H | 18" Dia x 36"H





**PIE SLICE™**

**MULTI ANGLE™**

24"L x 12"W x 36"H



**PLANTER™**

**INFINITY™**

30"Sq x 30"H | 36"Sq x 36"H





WAVE™

LONG CHAIR™



AZTEC™ II

ROUND WAVE™

10" Sq Base x 2" Sq Post x 35"H





WAIT™ BENCH

CHARIOT™

60"L x 18"W x 19"H

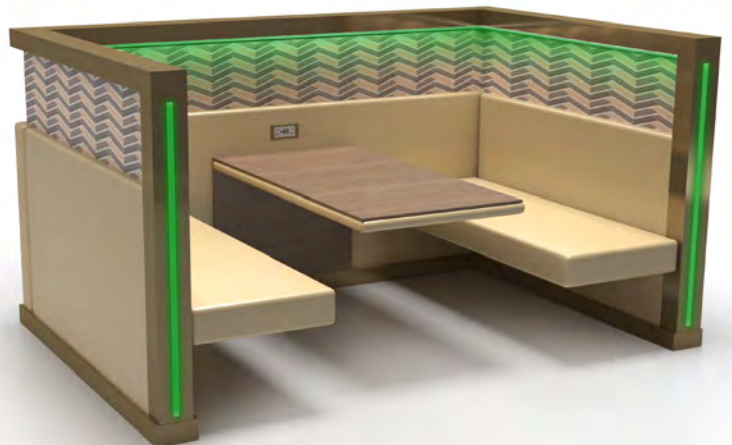
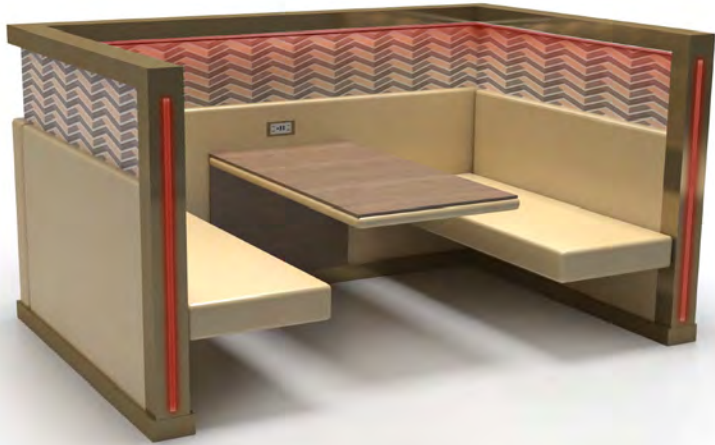


LUNCH BOOTH DELTA SKY CLUB

WOODLOVE™

78" Sq x 60"H



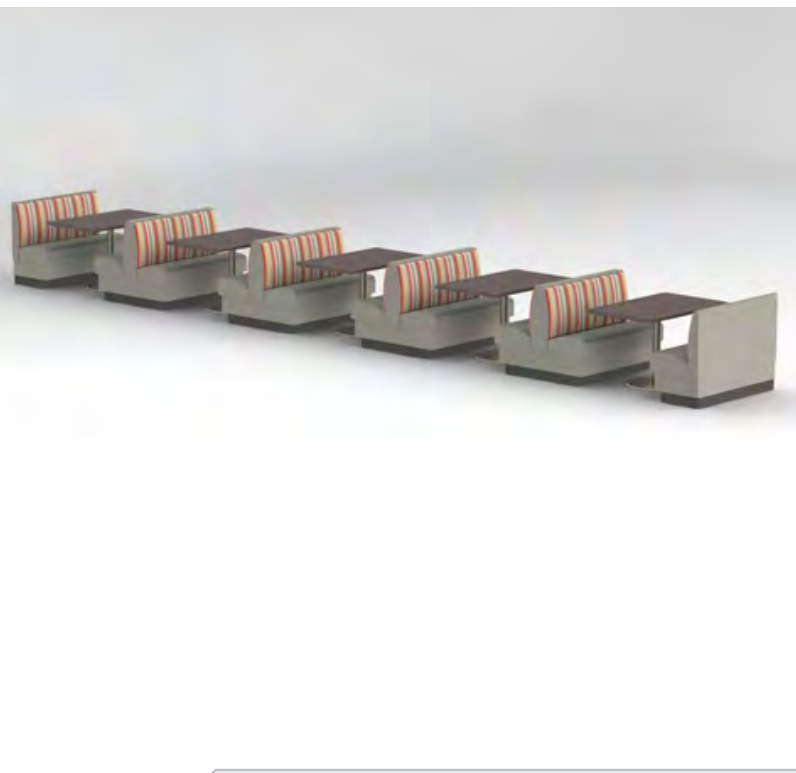


LUNCH BOOTH **DELTA SKY CLUB**

78" Sq x 60"H

**DELTA SKY CLUB** LUNCH BOOTH

78" Sq x 60"H



LUNCH BOOTH **DELTA SKY CLUB**

78" Sq x 60"H



**PYRAMID™ SMOKER**

12" Sq x 44"H





CARBON FIBER DISCO™ BAR

72"L x 30"W x 48"H

DISCO™ BAR CARBON FIBER

72"L x 30"W x 48"H

